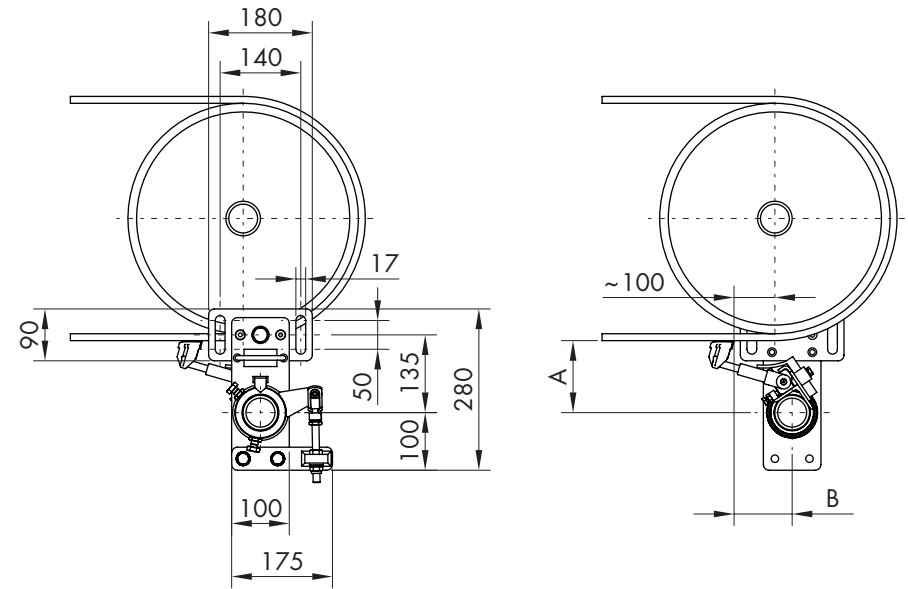
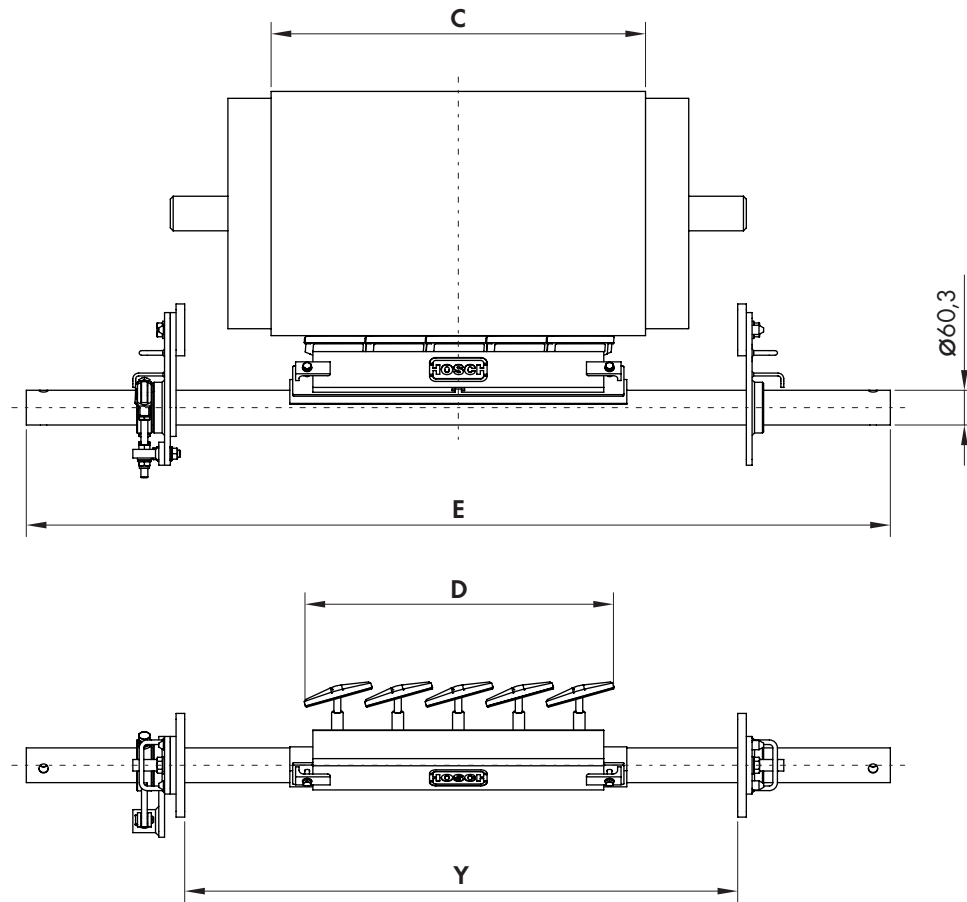


HOSCH Sprung Blade Scraper Type A1

Dimension Sheet



Belt width	Cleaning width	Modules	Assembly carrier length
A [mm]	B [mm]	[Qty.]	C [mm]
500	435	4	1400
650	540	5	1500
800	645	6	1700
900	750	7	1800
1000	855	8	1900
1050	960	9	2100
1200	1065	10	2200

Variable geometry (untensioned pos.)	
A [mm]	B [mm]
100	120
110	115
120	105
130	95

"Y" = Spindle distance should be as short as possible

The illustration shows a scraper in the untensioned position.